


Garden and Aviaries containing Foreign Birds and Animals.



# STANSTEAD ABBOTTS,

## ST. MARGARETS.

---

 MOST picturesque village adjoining St. Margarets (G.E.R.), noted for its fishing, and only 19 miles from London, 2 miles from Ware, 4 miles from Hertford, and 1½ miles from Rye House, the scene of Rumbolds plot against the life of King Charles the Second.

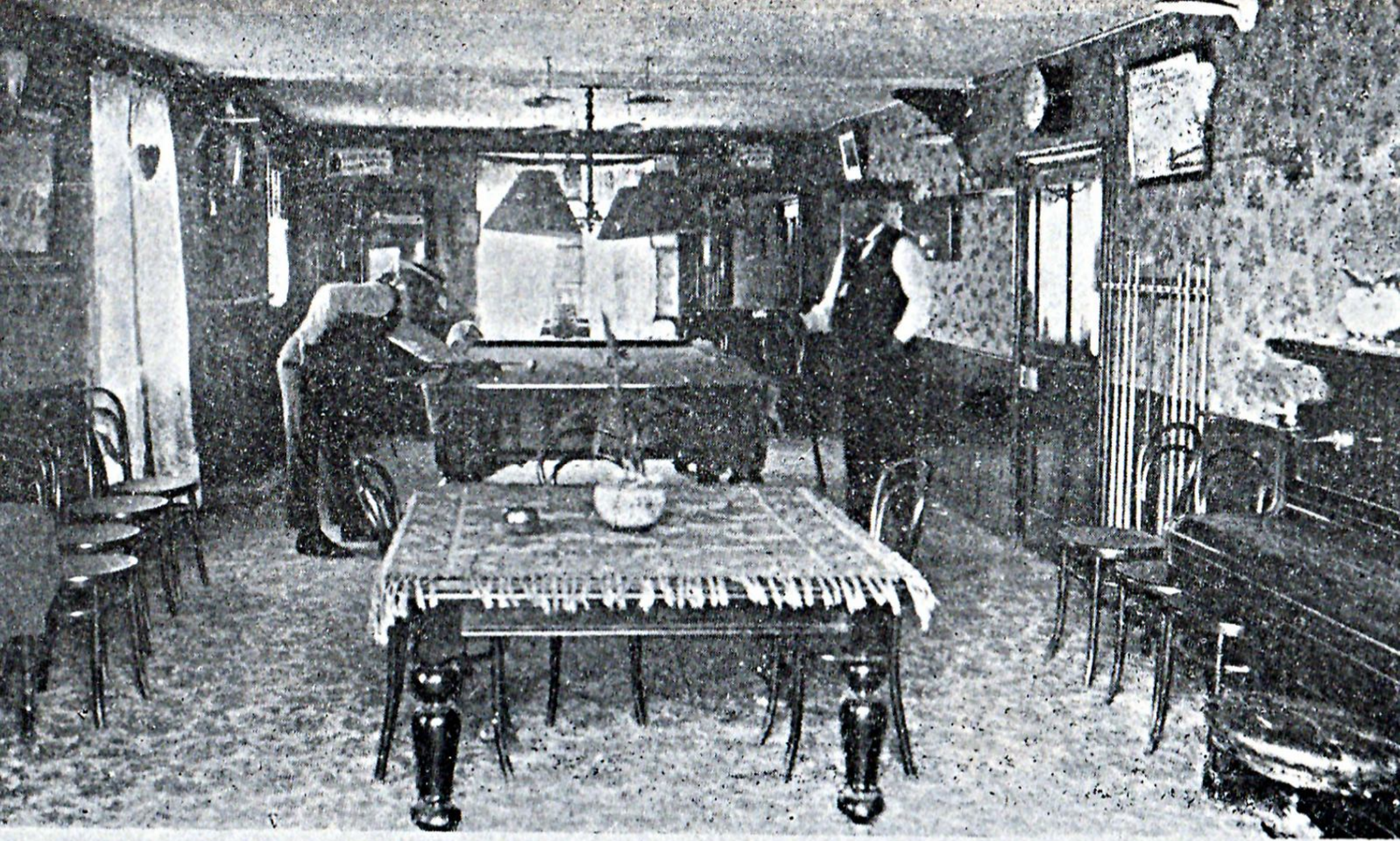
The great Bed of Ware : a famous bedstead, sufficiently large to hold 12 persons. Steam Launches or Brakes can be hired to visit the above, or other places.





Stable Yard—"Red Lion" Hotel.





Billiard Room—"Red Lion" Hotel.





Dining Room to accommodate 160 persons.





Side of Dining Room.





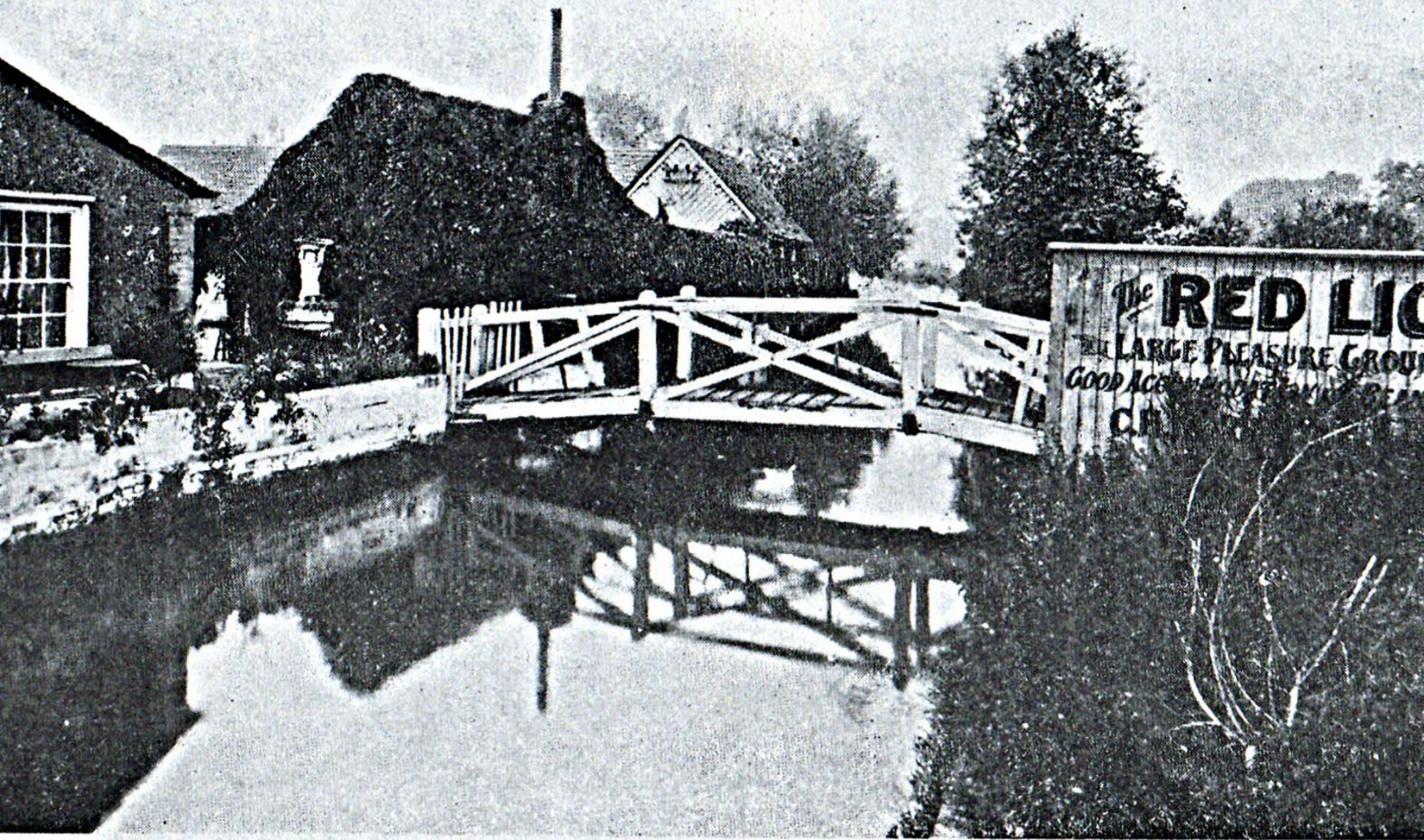
Quoit Ground on the left, and Drive leading to Meadow.





High Street, Stanstead Abbots.





View of River running through Grounds of "Red Lion" Hotel.





River running through Grounds of "Red Lion" Hotel.



# —... BILL OF FARE. ...—



ROAST BEEF. ROAST VEAL AND HAM.

BOILED LEG OF MUTTON—CAPER SAUCE OR ROAST LAMB & MINT SAUCE.

+ +

VEGETABLES IN SEASON.

+ +

**SWEETS,**

PLUM PUDDINGS.

FRUIT TARTS AND STEWED FRUITS. CUSTARDS. JELLIES.

+ +

BREAD, CHEESE AND SALAD.

**3/6 per head** (3d. extra per head, beer or minerals).

POULTRY (extra 1/3 head), consisting of ROAST FOWLS OR BOILED FOWLS. ROAST DUCKS.

TEAS, consisting of Bread and Butter, Jam, Cake, and Watercress, or Lettuce, &c., 9d. per head.

With Eggs, 1/. With Cold Meat or Ham, 1/6 PLAIN TEAS, 6d. per head.

**Quotations for Special Dinners, Banquets, &c., on application.**





"Red Lion" Hotel, St. Margarets, Ware, Herts.